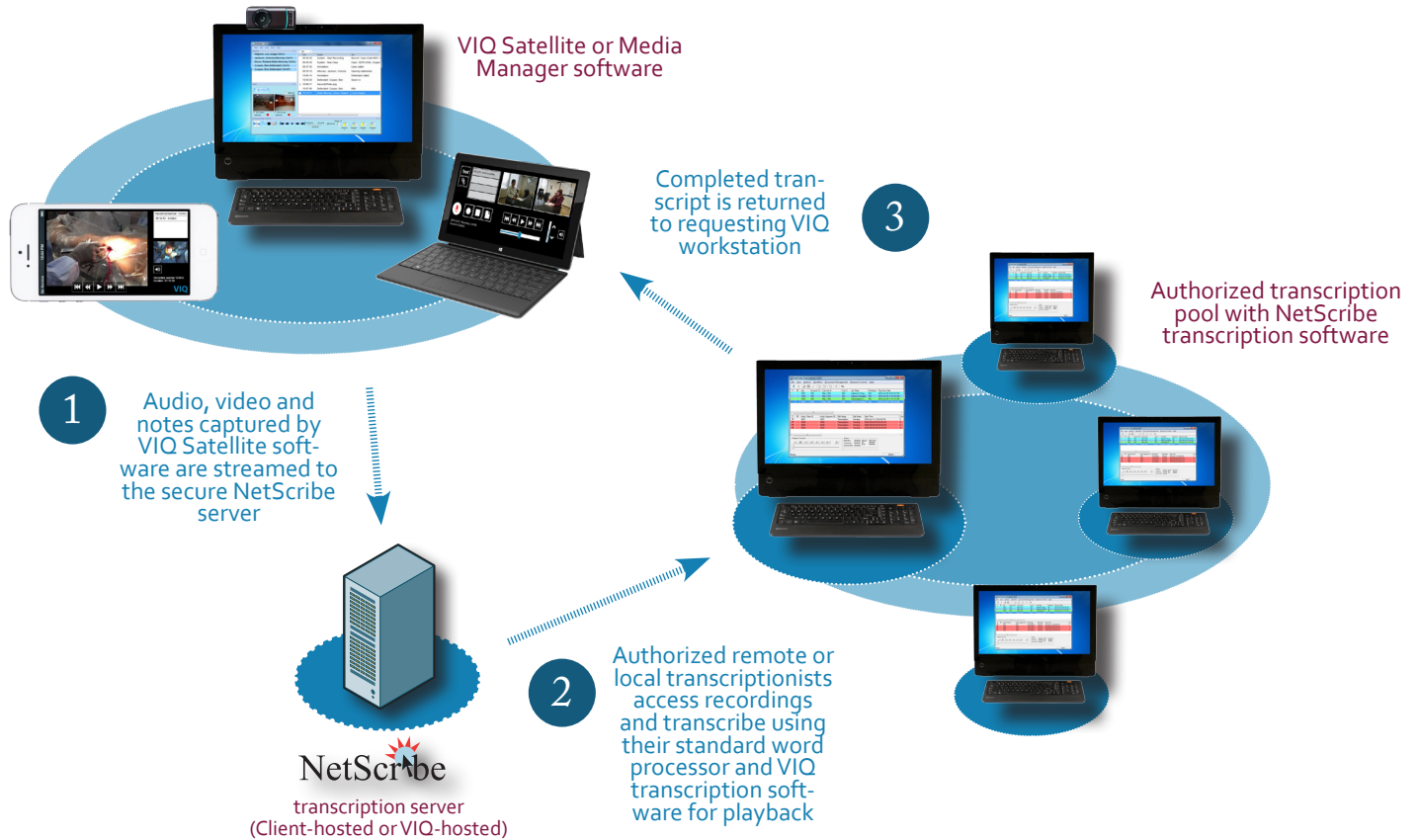


Capture, transfer, manage, transcribe and deliver.

The VIQ NetScribe web-based transcription solution allows you to control your transcription workflow in a way that's secure and accessible. Your audio, video and notes are **privately** and **securely** transferred to your **authorized** transcriptionists via encrypted Internet channels to the NetScribe server, which can be privately hosted or hosted in VIQ's secure data center.

So how does it work?



The NetScribe plugin can be activated on any VIQ Satellite recording station (**including tablets or mobile phones**), instantly sending audio, video and notes to the secure NetScribe server via the Internet. NetScribe can also import audio files captured by **third-party** solutions.

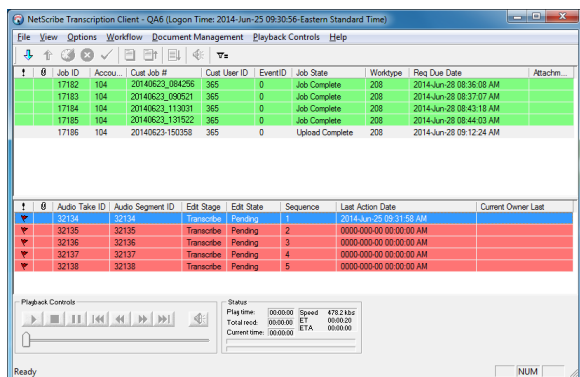
Recordings are marked with a **customized work type** which determines which transcriptionists will have access to the audio and how quickly the transcription should be completed. Work types can be used to control access to recordings to specific pools of transcriptionists, based on criteria such as language or security clearance. Since NetScribe is entirely web-based, you can use **local or remote transcriptionists**.

Transcriptionists use their fully-featured NetScribe transcription software to review audio and video and view the notes, using their standard word processor to create the transcript. With NetScribe, multiple transcriptionists can work on separate segments of **the same recording at the same time** for faster turnaround. When the final transcript is complete, it is automatically returned to the original workstation that requested the job.

NetScribe's secure workflow makes it ideal for **courts** and other legal proceedings, **medical** transcription, **legislatures** and committee meetings, **public meetings** and other government transparency and accessibility initiatives, and **more**.

NetScribe is:

- **High security** - encrypted files can only be accessed by the transcriptionists you specify, unlike FTP which can be slow and insecure
- **Private** - NetScribe uses top of the line privacy controls that comply with local and international privacy and usability standards such as HIPPA and 508
- **Fast** - turnaround can be near-real time as transcriptionists have instant access to recordings
- **Efficient** - recordings can be delivered in customizable "takes" or partitions so multiple transcriptionists in multiple locations can be working on the same job at the same time
- **Flexible** - NetScribe works with VIQ audio-video recordings but can also import third-party audio files quickly and easily
- **Customizable** - allows you to personalize the transcription and editing process and use custom document templates
- **Searchable** - intuitive search function allows you to easily filter and sort through stored audio files
- **Controlled** - you can host and manage your own private NetScribe server, allowing you to configure the privacy, security and access that you need, or use VIQ's top of the line data center
- **Complete** - VIQ manages the entire transcription process, from capture to transcription to final transcript delivery



VIQ Transcription software

The NetScribe transcription client provides advanced transcription features such as independent, multi-channel playback, footpedal and hotkey control, and more, all from a simple graphic-based interface.

SYSTEM REQUIREMENTS

NetScribe Transcription Plugin

- Included with VIQ Satellite recording workstation or VIQ Media Manager license
- High-speed Internet connection (cable, DSL)
- NetScribe can also import third-party audio files in MP3 format

NetScribe Transcription Workstations

- Windows 7 Professional (32 or 64 bit)
- Intel Core i5 2.0 GHz
- 4 GB RAM
- Minimum hard disk size of 500GB
- Display resolution of 1024 x 768 and 16-bit color depth
- High-speed Internet connection (cable, DSL)
- Sound Blaster or compatible sound card for playback
- Microsoft Word or Corel Word-Perfect for transcription
- USB foot pedal for transcription (optional)

NetScribe Server (Client Hosted)

- Windows Server 2008 R2 Standard or 2012 (64 bit) (Virtual Server supported)
- SQL Server 2008 R2 or 2014 (64 bit)
- High-capacity storage space, dependent on usage requirements
- High-speed Internet connection (cable, DSL)
- VMWare ESXi v 4.1.0 with (min.) 4 GB memory, 1 CPU and provisioned size 64 GB
- Option for IIS and the NetScribe database to be hosted on separate machines for improved system security